

Product: HPAL110-4G/LTE

Product Order Code:  
BM-02467/LTE

## Hinged Wideband Connector Mounted Antenna

LTE-4G, CELLULAR (2G, 3G)

- Compact robust wideband monopole antenna
- RoHS 2011/65/EU & RoHS3 (2015/863/EU compliant)
- Request samples for test & evaluation via enquiry@bloomice.com



### Technical Data

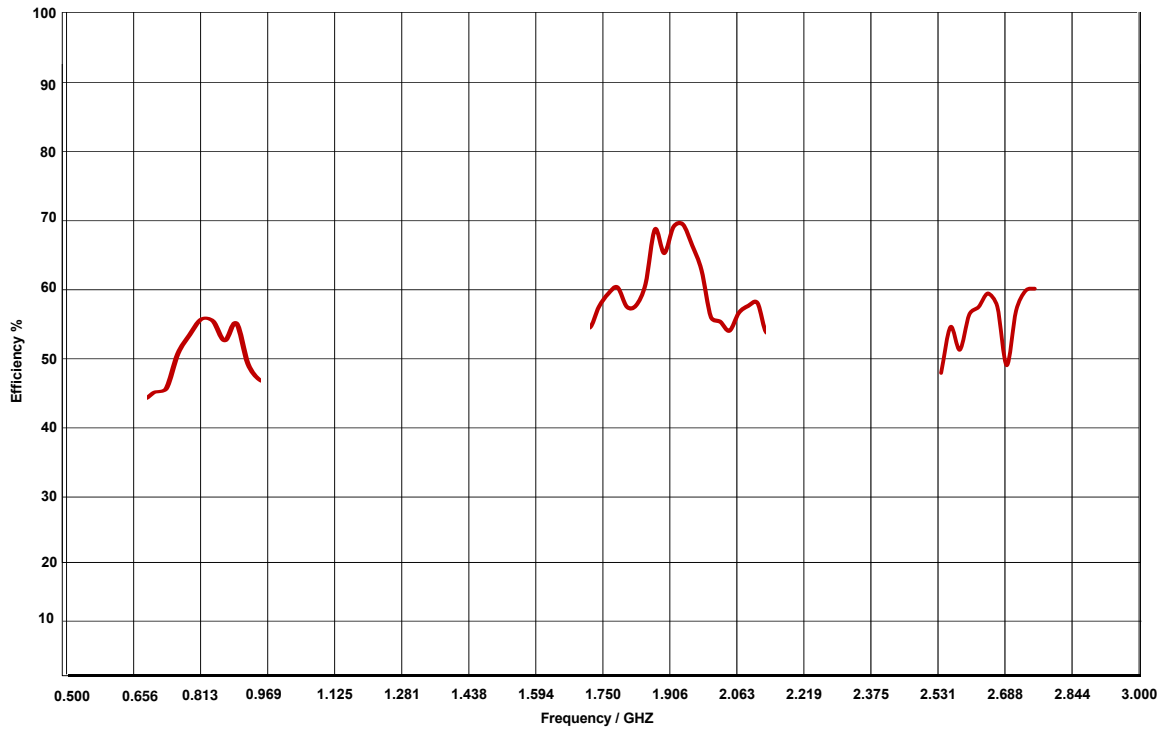
Dimensions	110mm (Overall Height) x 10mm (D) Base Diameter	
Weight	34g	
Construction Materials	Base - Black SMA / Cover - UV Stable ABS	
Mounting Arrangement	Direct Mounted SMA Male Connector Ground Plane Dependent	
Temperature Range	-40 to +85° C	
Protection Class	IP55	
<b>Cellular LTE / 3G / 2G</b>		
Frequency Standards	2G / 3G / 4G-LTE / CAT-M1 / CAT-M2 / DCS / GPRS / GSM900 / GSM1800 / LTE-NB1 / NB-IoT / PCS / UMTS	
Frequency Range	LTE 700 + GSM 900: GSM 1800: UMTS: LTE (High):	698 - 960 MHz 1710 - 1880 MHz 1920 - 2170 MHz 2300 - 2700 MHz
Impedance	50 Ohm	
Polarisation	Linear	
Peak Gain	LTE 700 + GSM 900: GSM 1800: UMTS: LTE (High):	@ 790-960 MHz; 0dBi @ 1710-1880 MHz; 2.14dBi @ 1920-2170 MHz; 2.14dBi @ 2300-2700 MHz; 0dBi
Radiation Pattern	Omni-Directional	
Maximum Input Power @ 30°C	LTE 700 + GSM 900: GSM 1800: UMTS: LTE (High):	25 Watts @ 790-960 MHz 25 Watts @ 1710-1880 MHz 25 Watts @ 1920-2170 MHz 25 Watts @ 2300-2700 MHz
VSWR	≤ 2:1 (All Bands)	
Radiator Type	Monopole	
Connector	SMA Male (Hinged)	
Test & Measurement Conditions	Fixed Upon 150mm x 150mm Ground Plane	

dBi: Referenced to an isotropic radiator

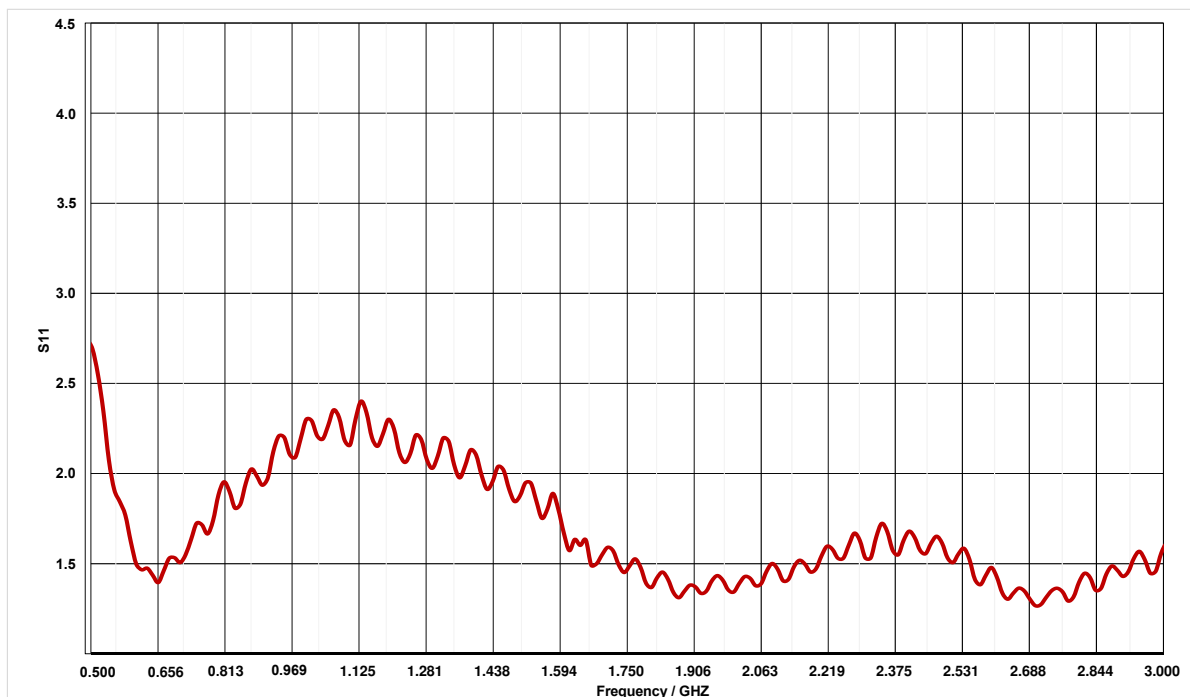
Product: HPAL110-4G/LTE

Product Order Code:  
BM-02467/LTE

### Radiated Efficiency



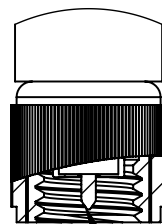
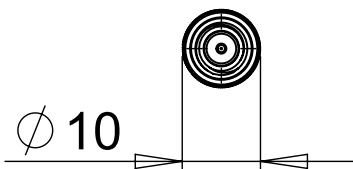
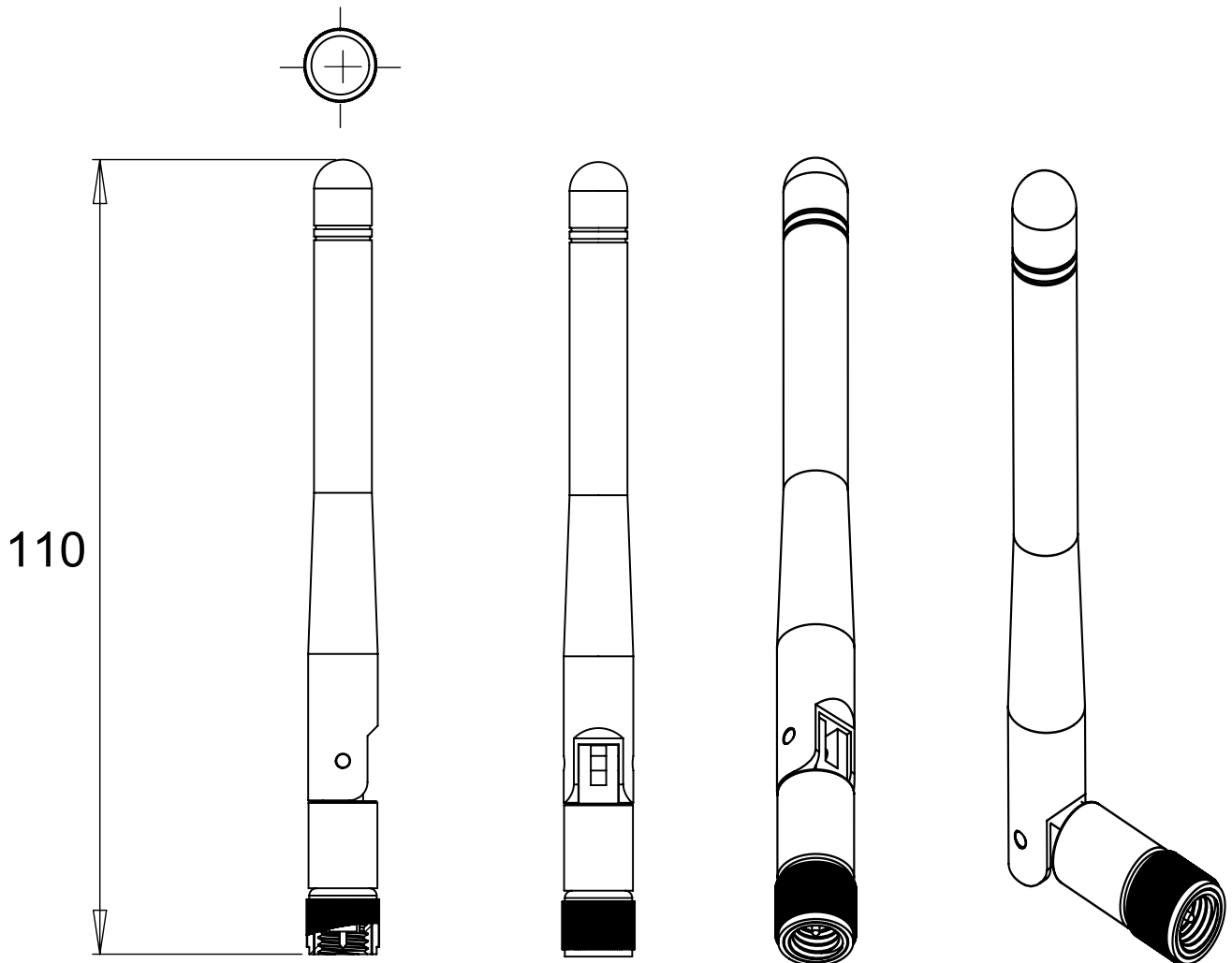
### Typical VSWR



Product: HPAL110-4G/LTE

Product Order Code:  
BM-02467/LTE

CAD Data



SMA MALE